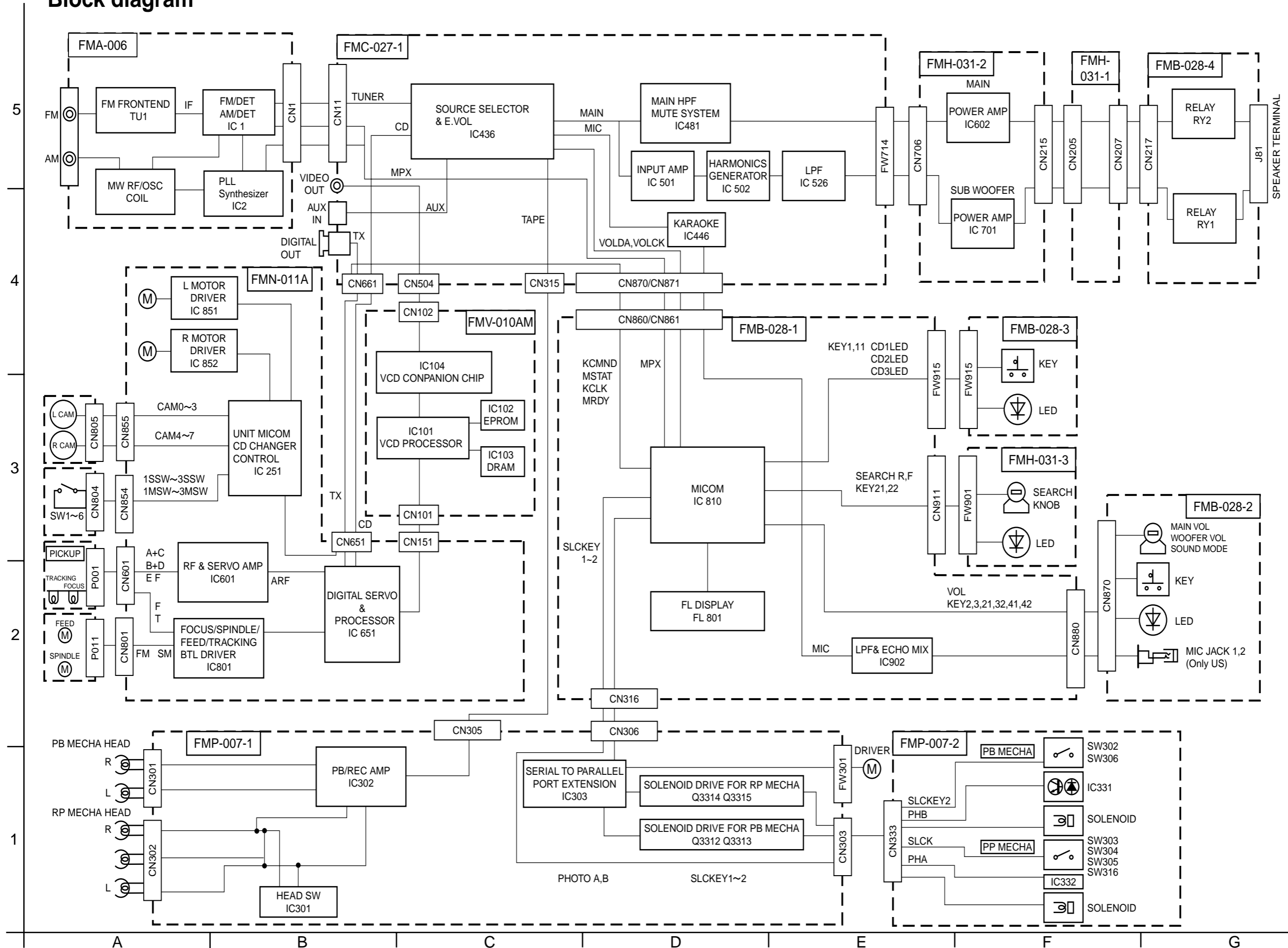


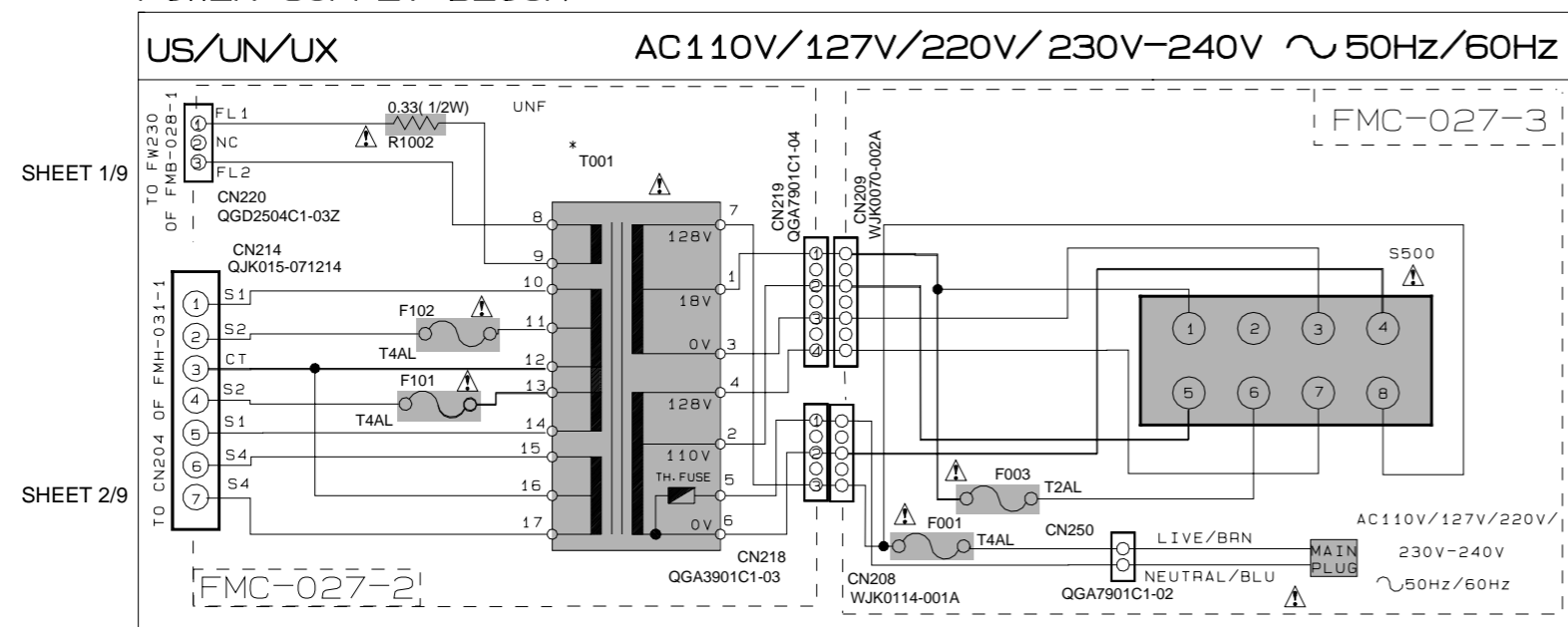
Block diagram



Standard schematic diagrams

Power supply section

POWER SUPPLY BLOCK

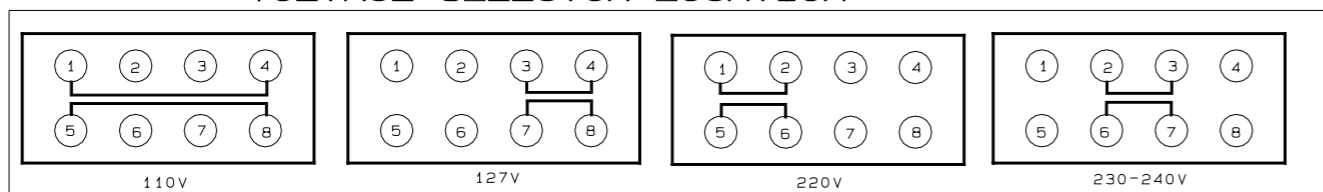


EXPLANATION OF OVERALL OF SCHEMA.

MODEL CA-MXG75/78V/CA-MXGT85/88/95/98V

SHEET NUMBER	MODEL NUMBERS TO BE APPLIED	CIRCUITS DESCRIPTION
1/9	CA-MXG75V/78V CA-MXGT85/88/95/98V	. PRIMARY WITH MAINS TRANSFORMER
2/9	CA-MXG75V/78V CA-MXGT85/88/95/98V	. DC REGULATORS/AUDIO OUTPUT
3/9	CA-MXG75V/78V CA-MXGT85/88/95/98V	. EXTERNAL INPUT. SOURCE SELECTOR SWITCH
4/9	CA-MXG75V/78V CA-MXGT85/88/95/98V	. FL DISPLAYS. SYSTEM CONTROL LSI
5/9	CA-MXG75V/78V CA-MXGT85/88/95/98V	. USER CONTROL KEYS. MIC AMP
6/9	CA-MXG75V/78V CA-MXGT85/88/95/98V	. CD SERVO AND CD SYSTEM CONTROL . CD CHANGER MECHANISM CONTROL
7/9	CA-MXG75V/78V CA-MXGT85/88/95/98V	. TAPE DECK MECHANISM CONTROL . TAPE CIRCUITS SUCH AS PRE-AMP AND BIAS
8/9	CA-MXG75V/78V CA-MXGT85/88/95/98V	. TUNER RF/IF/FM MULTIPLEX
9/9	CA-MXG75V/78V CA-MXGT85/88/95/98V	. VIDEO OUT

VOLTAGE SELECTOR LOCATION



* MARK

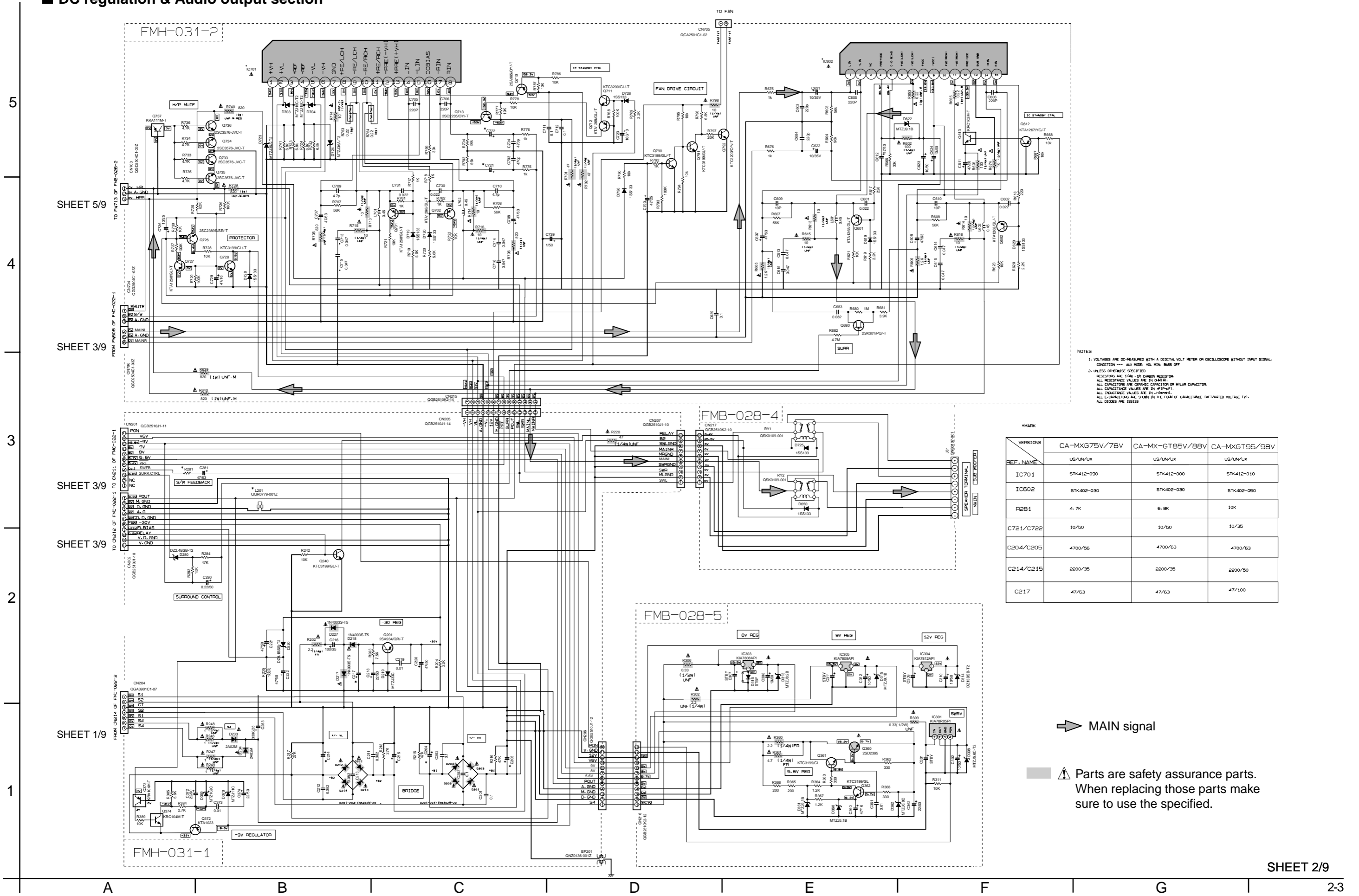
MODEL REF. NO.	MX-G75/78V	MX-GT85/88V	MX-GT95/98V
T001	QQT0319-003	QQT0320-003	QQT0322-003

VERSION CODES

UN : ASEAN
UX : SAUDI ARABIA
US : SINGAPORE AND UNIVERSAL EXCEPT ALL OF ABOVE

Parts are safety assurance parts.
When replacing those parts make sure to use the specified.

■ DC regulation & Audio output section



NOTES
1. VOLTAGES ARE DC-MEASURED WITH A DIGITAL VOLT METER OR OSCILLOSCOPE WITHOUT INPUT SIGNAL. CONDITION --- ALL MODES VOL 40% BMS OFF
2. UNLESS OTHERWISE SPECIFIED
RESISTORS ARE 1/4W ± 5% CARBON RESISTOR.
ALL RESISTANCE VALUES ARE IN OHMS.
ALL CAPACITORS ARE CERAMIC CAPACITOR OR MILAR CAPACITOR.
ALL CAPACITANCE VALUES ARE IN nF/µF/pF.
ALL INDUCTANCE VALUES ARE IN mH/µH.
ALL CAPACITORS ARE SHOWN IN THE FORM OF CAPACITANCE (V/F/RATED VOLTAGE V).
ALL DIODES ARE 1SS133

*MARK

VERSIONS	CA-MXG75V/78V	CA-MX-GT85V/88V	CA-MXGT95/98V
REF. NAME	US/UN/UK	US/UN/UK	US/UN/UK
IC701	STK412-090	STK412-000	STK412-010
IC602	STK402-030	STK402-030	STK402-050
R281	4.7K	6.8K	10K
C721/C722	10/50	10/50	10/35
C204/C205	4700/56	4700/63	4700/63
C214/C215	2200/35	2200/35	2200/50
C217	47/63	47/63	47/100

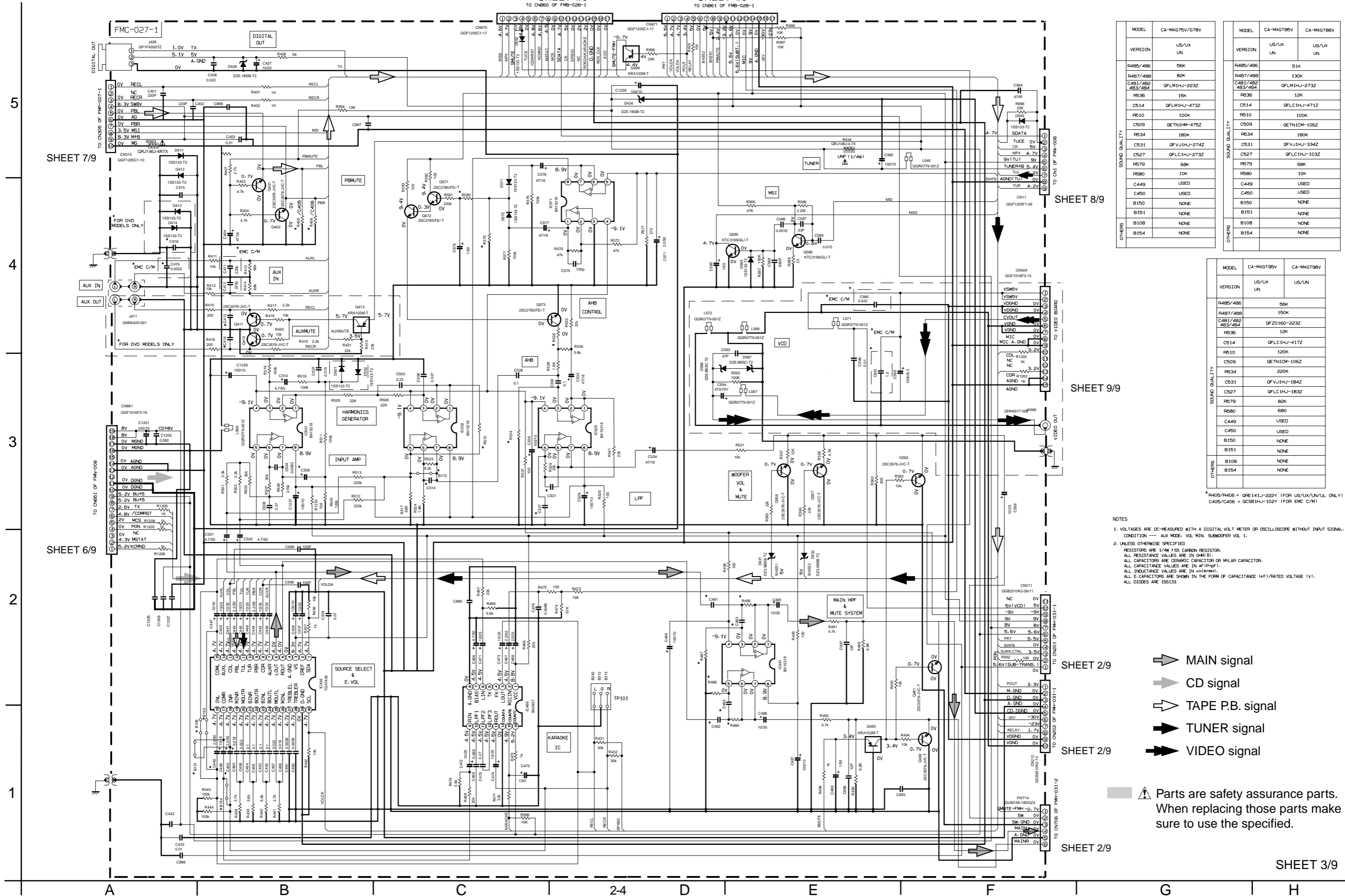
➔ MAIN signal

⚠ Parts are safety assurance parts. When replacing those parts make sure to use the specified.

Main section

SHEET 4/9
TO CN860 OF FM3-028-1

SHEET 4/9
TO CN861 OF FM3-028-1



MODEL	CA-MXG75V/G78V	MODEL	CA-MXG78V	CA-MXG78V
VERSION	US/UX UN	VERSION	US/UX UN	US/UX UN
R485/486	56K	R485/486	51K	
R487/488	62K	R487/488	130K	
C481/482 483/484	QFLM1HJ-223Z	C481/482 483/484	QFLM1HJ-273Z	
R536	15K	R536	12K	
C514	QFLM1HJ-473Z	C514	QFLC1HJ-471Z	
R510	100K	R510	100K	
C509	QETN1M-475Z	C509	QETN1CM-106Z	
R534	180K	R534	180K	
C531	QFVJ1HJ-274Z	C531	QFVJ1HJ-334Z	
C527	QFLC1HJ-273Z	C527	QFLC1HJ-103Z	
R579	68K	R579	68K	
R580	10K	R580	10K	
C449	USED	C449	USED	
C450	USED	C450	USED	
B150	NONE	B150	NONE	
B151	NONE	B151	NONE	
B108	NONE	B108	NONE	
B154	NONE	B154	NONE	

MODEL	CA-MXG795V	CA-MXG795V
VERSION	US/UX UN	US/UX UN
R485/486	56K	
R487/488	150K	
C481/482 483/484	QF20160-223Z	
R536	12K	
C514	QFLC1HJ-417Z	
R510	120K	
C509	QETN1CM-106Z	
R534	220K	
C531	QFVJ1HJ-1B4Z	
C527	QFLC1HJ-1B3Z	
R579	82K	
R580	680	
C449	USED	
C450	USED	
B150	NONE	
B151	NONE	
B108	NONE	
B154	NONE	

*R405/R406 = QRE141J-222Y (FOR US/UX/UN/UL ONLY)
C405/C406 = QCS31HJ-102Y (FOR EMC C/M)

- NOTES
- VOLTAGES ARE DC-MEASURED WITH A DIGITAL VOLT METER OR OSCILLOSCOPE WITHOUT INPUT SIGNAL. CONDITION --- AUX MODE. VOL MIN SUBWOOFER VOL 1.
 - UNLESS OTHERWISE SPECIFIED
RESISTORS ARE 1/4W 1% CARBON RESISTOR.
ALL RESISTANCE VALUES ARE IN OHM(S).
ALL CAPACITORS ARE CERAMIC CAPACITOR OR MYLAR CAPACITOR.
ALL CAPACITANCE VALUES ARE IN #P(P)P(F).
ALL INDUCTANCE VALUES ARE IN MH(M)H(M).
ALL E-CAPACITORS ARE SHOWN IN THE FORM OF CAPACITANCE (µF)/RATED VOLTAGE (V).
ALL DIODES ARE 1SS133

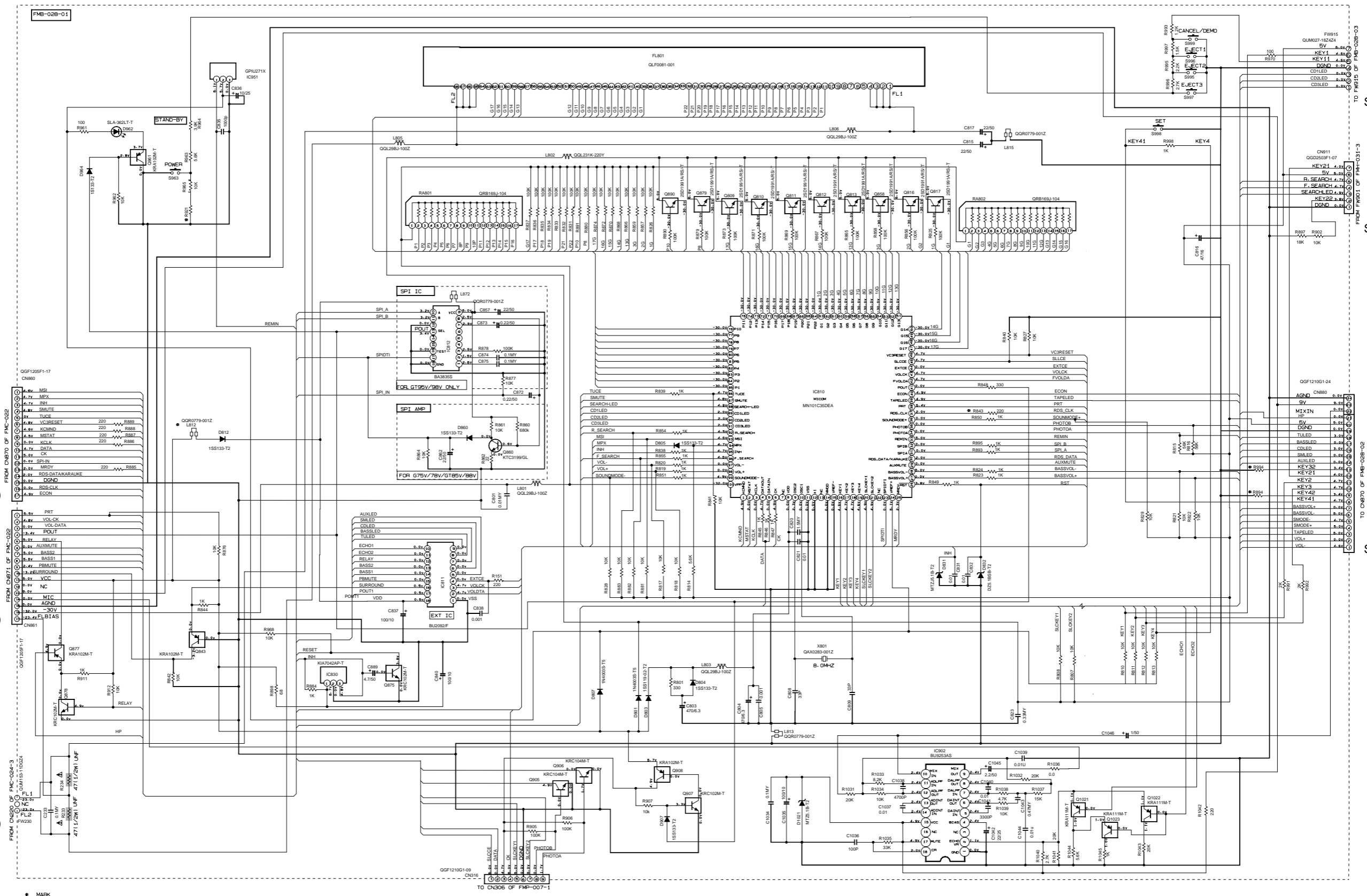
- ➔ MAIN signal
 - ➔ CD signal
 - ➔ TAPE P.B. signal
 - ➔ TUNER signal
 - ➔ VIDEO signal
- ⚠ Parts are safety assurance parts. When replacing those parts make sure to use the specified.

FL & System control section

5
4
3
2
1

SHEET 3/9
SHEET 3/9
SHEET 1/9

SHEET 5/9
SHEET 5/9
SHEET 5/9



MARK

	CA-MXG75V/78V UX	CA-MXG75V/78V US-UN	CA-MXG75V/88V UX	CA-MXG75V/88V US-UN	CA-MXG75V/98V UX	CA-MXG75V/98V US-UN
R821	330K	330K	75K	75K	18K	18K
R84	18K	75K	18K	75K	18K	75K
R84	18K	330K	18K	330K	18K	330K
R84	NONE	NONE	NONE	NONE	NONE	NONE
X8D1	QAX0283-001Z	QAX0283-001Z	QAX0283-001Z	QAX0283-001Z	QAX0283-001Z	QAX0283-001Z

SHEET 7/9

NOTES
1. VOLTAGES ARE DC-MEASURED WITH A DIGITAL VOLT METER OR OSCILLOSCOPE WITHOUT INPUT SIGNAL.
CONDITION --- AUX MODE, VOL. MIN., BASS LEVEL 1
2. UNLESS OTHERWISE SPECIFIED
RESISTORS ARE 1/4W 1% CARBON RESISTOR.
ALL RESISTANCE VALUES ARE IN OHM(S).
ALL CAPACITORS ARE CERAMIC CAPACITOR OR MLAR CAPACITOR.
ALL CAPACITANCE VALUES ARE IN P(F).
ALL INDUCTANCE VALUES ARE IN H(MH).
ALL DIMENSIONS ARE SHOWN IN THE FORM OF CAPACITANCE (L) / RATED VOLTAGE (V).
ALL DIMENSIONS ARE 155133

Parts are safety assurance parts.
When replacing those parts make sure to use the specified.

Front key section

5

4

3

2

1

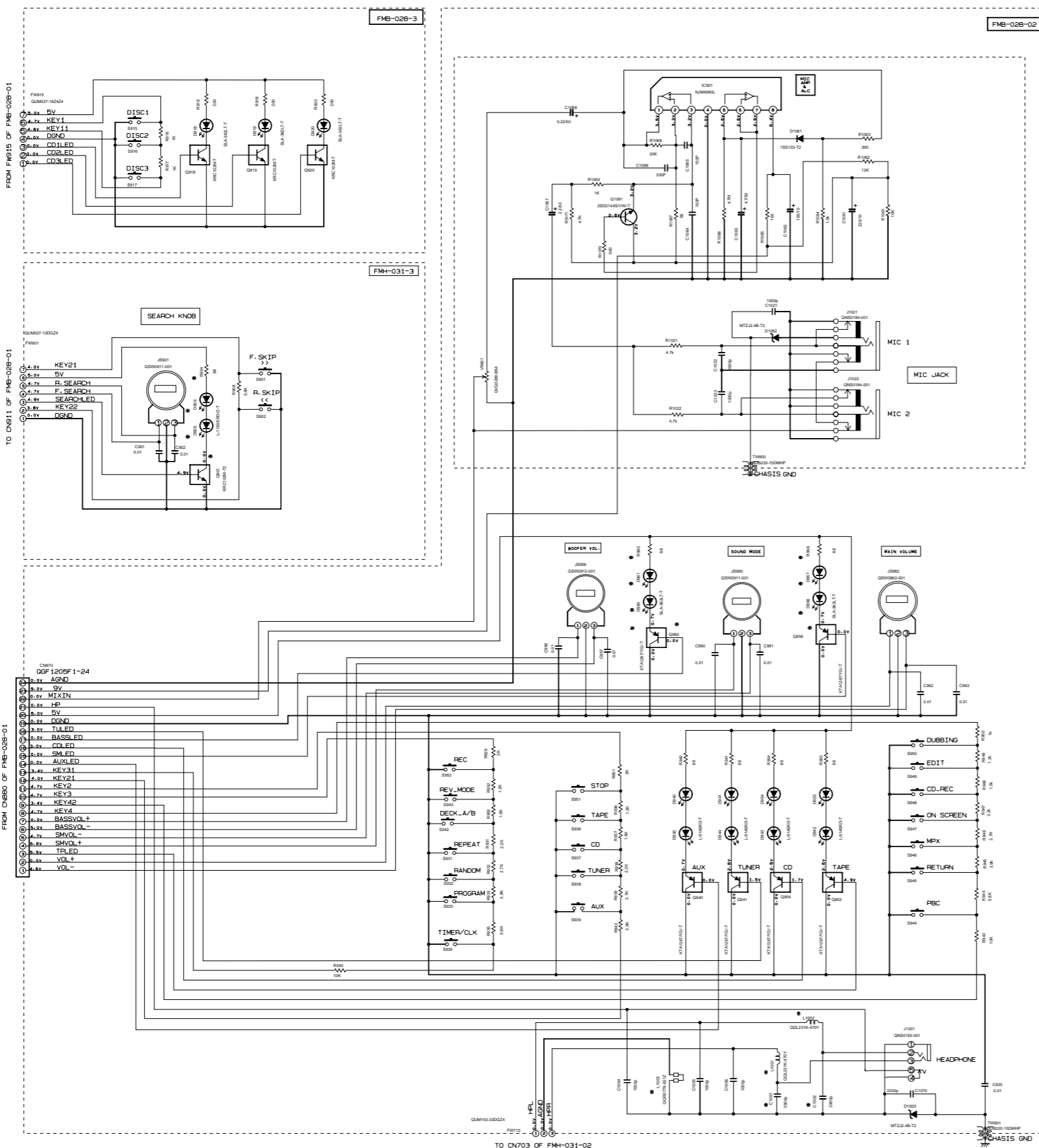
SHEET 4/9

SHEET 4/9

SHEET 4/9

SHEET 2/9

SHEET 5/9



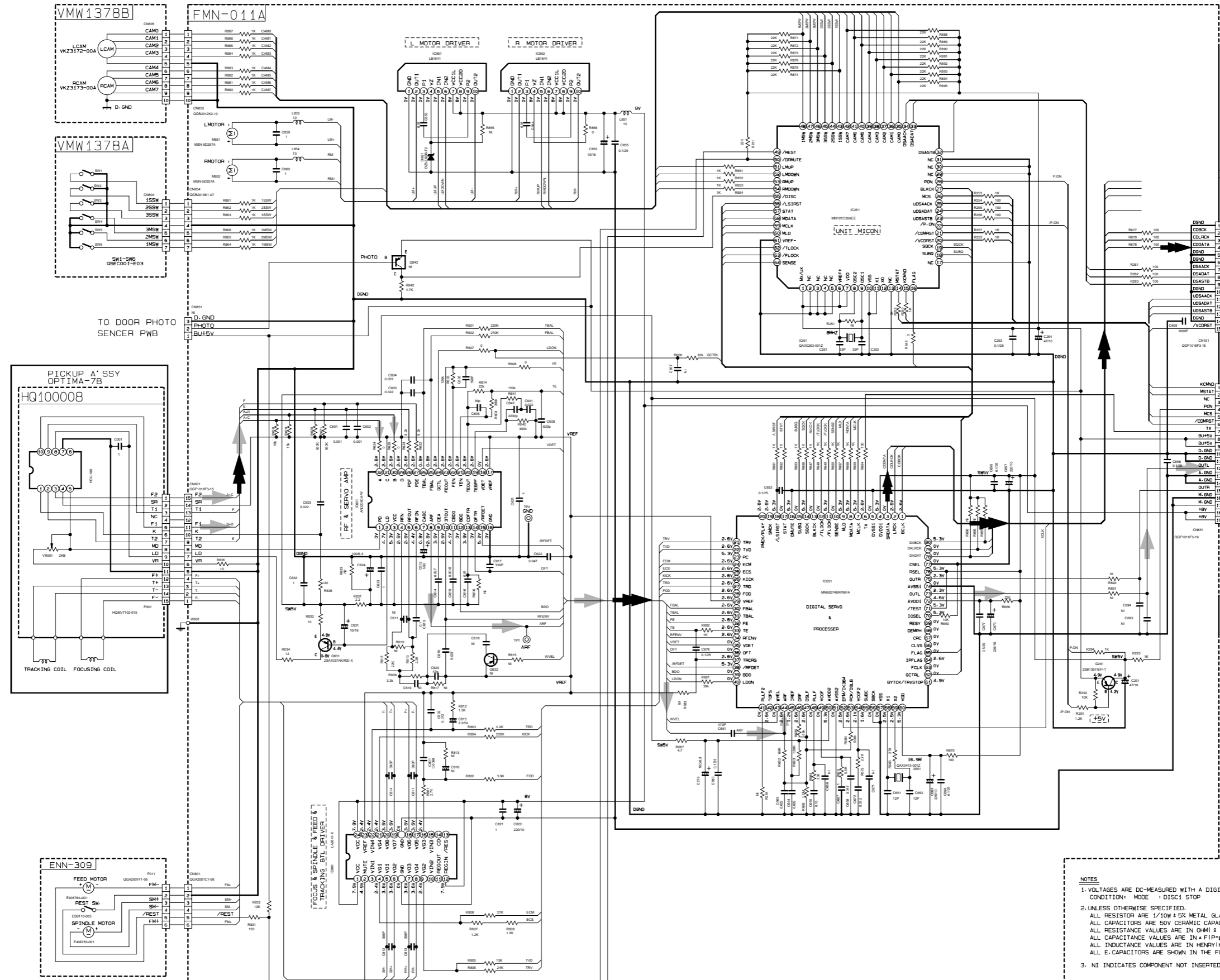
MARK

	CA-MXGT85V/78V US-UN	CA-MXGT75V/78V UX	CA-MXGT85V/88V US-UN	CA-MXGT85V/88V UX	CA-MXGT95V/88V US-UN	CA-MXGT95V/88V UX
D904, D905, D956, D957 D960, D961	NONE	NONE	NONE	NONE	SLA-362L-T	SLA-362L-T
L1001-L1002	SHORT	SHORT	SHORT	SHORT	SHORT	SHORT
C1001, C1002	NONE	NONE	NONE	NONE	NONE	NONE
L1003	GQL231K-2R2Y	GQL231K-2R2Y	GQL231K-2R2Y	GQL231K-2R2Y	GQL231K-2R2Y	GQL231K-2R2Y
R904, R956, R960	NONE	NONE	NONE	NONE	6B	6B
Q901	NONE	NONE	NONE	NONE	KPC102M-T	KPC102M-T
Q956, Q960	NONE	NONE	NONE	NONE	KTA1267/YG/-T	KTA1267/YG/-T

- NOTES
- VOLTAGES ARE DC-MEASURED WITH A DIGITAL VOLT METER OR OSCILLOSCOPE WITHOUT INPUT SIGNAL.
CONDITION --- AUX MODE, VOL. MDN, BASS OFF.
 - UNLESS OTHERWISE SPECIFIED:
RESISTORS ARE 1/4W ± 5% CARBON RESISTOR.
ALL RESISTANCE VALUES ARE IN OHMS.
ALL CAPACITORS ARE CERAMIC CAPACITOR OR MYLAR CAPACITOR.
ALL CAPACITANCE VALUES ARE IN μF (μF).
ALL INDUCTANCE VALUES ARE IN mH (mH).
ALL CAPACITORS ARE SHOWN IN THE FORM OF CAPACITANCE (μF/RATED VOLTAGE (V)).
ALL DIODES ARE 1SS133.

CD servo control section

5
4
3
2
1



TO CN101
OF FMV-010AM
SHEET 9/9

TO CN61
OF FMC-022-1
SHEET 3/9

➔ CD signal
➔➔ VIDEO signal

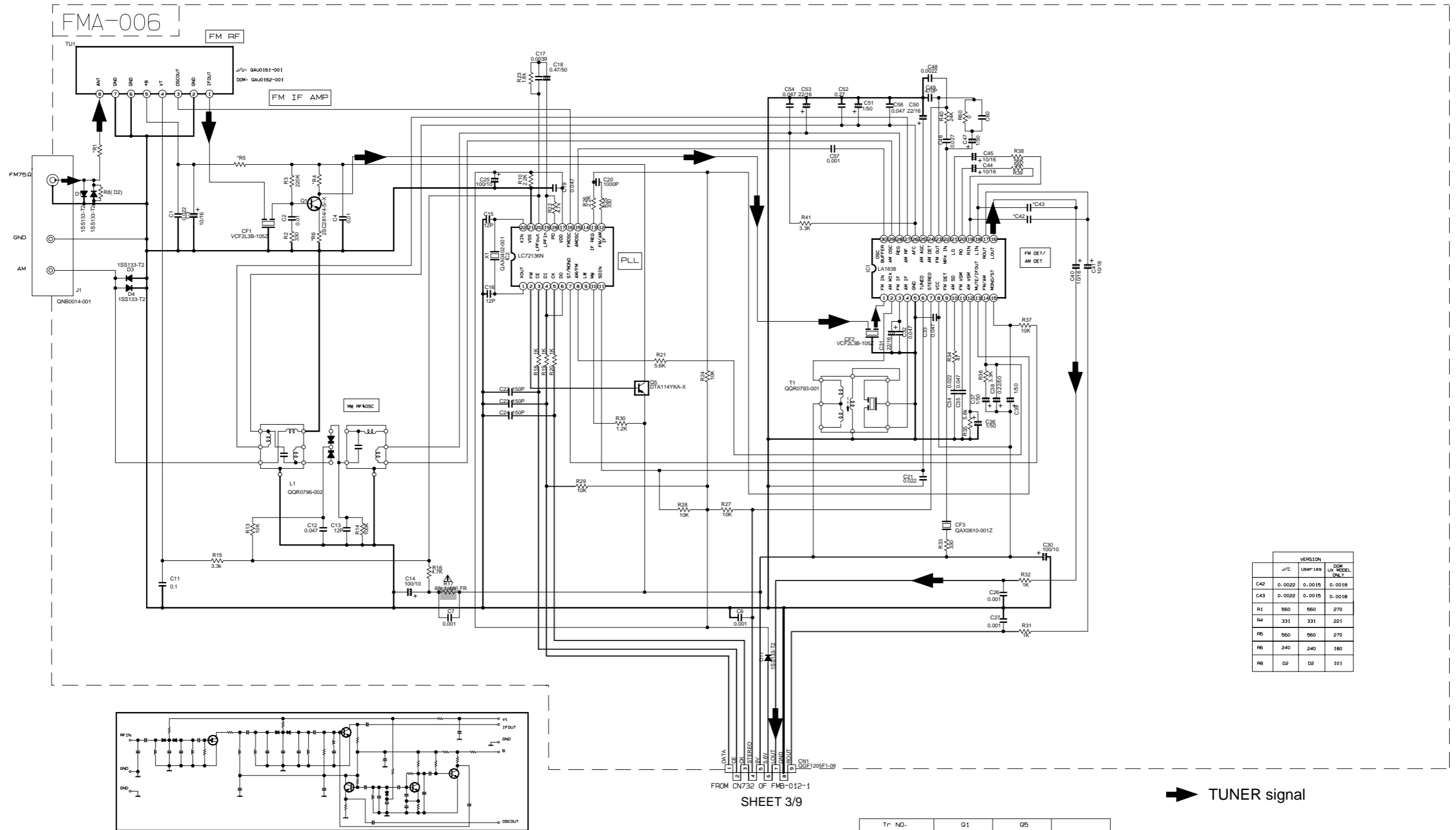
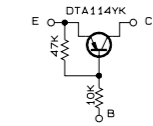
- NOTES**
1. VOLTAGES ARE DC-MEASURED WITH A DIGITAL VOLT METER
CONDITION: MODE : DISC1 STOP
 2. UNLESS OTHERWISE SPECIFIED,
ALL RESISTORS ARE 1/10W ± 5% METAL GLAZE RESISTOR.
ALL CAPACITORS ARE 50V CERAMIC CAPACITOR OR 50V MYLAR CAPACITOR.
ALL RESISTANCE VALUES ARE IN Ω(M) Ω (K) Ω (M).
ALL CAPACITANCE VALUES ARE IN nF(pF).
ALL INDUCTANCE VALUES ARE IN HENRY(H).
ALL E-CAPACITORS ARE SHOWN IN THE FORM OF CAPACITANCE (μF)/RATED VOLTAGE (V).
 3. NI INDICATES COMPONENT NOT INSERTED

■ Tuner section

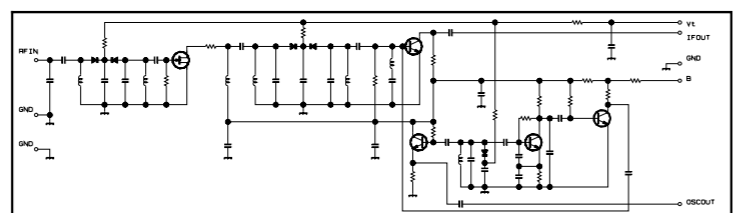
NOTES

1. VOLTAGES ARE DC-MEASURED WITH A DIGITAL VOLT METER.
2. ALL RESISTORS ARE 1/8W ±5% METAL GLAZE RESISTOR.
3. ALL RESISTANCE VALUES ARE IN OHM(Ω).
4. ALL CAPACITANCE VALUES ARE IN nF(nPF).
5. ALL E. CAPACITORS ARE SHOWN IN THE FORM OF CAPACITANCE (nF)/RATED VOLTAGE (V).
6. SI DIODES (▶) ARE ALL 1SS133-T THAT CAN BE CHANGED TO SIMILAR DIODE SUCH AS MA165 OR HSS104J.
7. PARTS NO. OF TRANSISTORS ARE AS FOLLOWS.
Q1 2SC2814/4-B/-X Q2-Q3 2SC2412K/R/-X
Q4-Q5 DTA114KA-X

B. INSIDE OF DIGITAL TRANSISTORS ARE SHOWN AS FOLLOWS:



VERSION			
J/C	USER#188	QEM	MODEL
		UX	DBL
C42	0.0022	0.0015	0.0018
C43	0.0022	0.0015	0.0018
R1	560	560	270
R4	331	331	221
R5	560	560	270
R6	240	240	180
R8	02	02	101



FROM CN732 OF FMB-012-1
SHEET 3/9

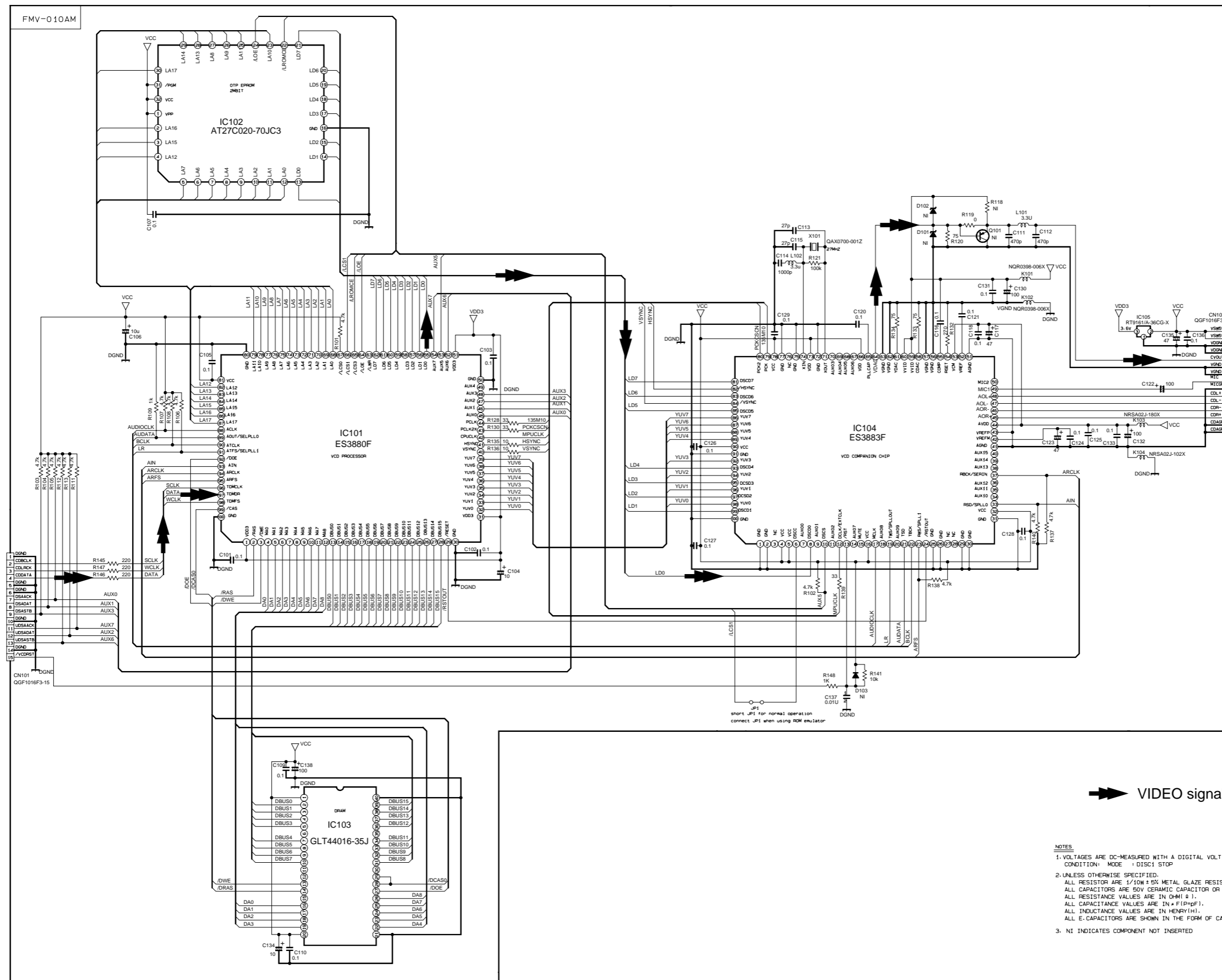
➔ TUNER signal

⚠ Parts are safety assurance parts. When replacing those parts make sure to use the specified.

	CONDITION	PIN NO.	1	2	3	4	5	6	7	8	9	10	11	12	13	14	15	16	17	18	19	20	21	22	23	24	25	26	27	28	29	30
IC1	FM NO SIGNAL		3.6	8.9	3.6	3.6	0	5.0	5.0	8.9	8.9	1.3	0.1	0	0.9	7.8	7.8	4.3	4.3	4.3	4.3	3.4	3.4	2.8	3.4	0	0	3.5	3.5	3.6	3.6	2.7
	FM 600B STEREO		3.6	8.9	3.6	3.6	0	0	5.0	8.9	8.9	1.3	4.3	0	0.9	7.8	7.8	4.3	4.3	4.3	4.3	3.4	3.4	2.8	3.4	0	0	3.6	3.6	3.6	3.6	2.7
	AM NO SIGNAL		3.5	9.0	3.5	3.5	0	5.0	5.1	9.0	2.6	1.3	0	0	0.9	4.7	5.5	4.3	4.3	4.3	3.3	3.2	2.8	ust	0.7	0.7	3.6	3.6	3.6	3.6	2.1	
IC2	FM NO SIGNAL		2.5	0	0	5.0	4.9	5.0	7.9	7.8	3.6	6.1	5.1	0	0	0	0	2.5	5.1	0.9	0.9	3.8	0	2.3								

Tr. NO.	Q1	Q5					
PIN NO.	E	C	B	E	C	B	
FM 87.5MHz NO SIGNAL	0	7.1	0.85	8.9	8.8	0	
AM 522kHz NO SIGNAL	0	0	0	9.0	0	8.9	
Tr. NO.	Q2	Q3	Q4				
PIN NO.	E	C	B	E	C	B	
AM 522kHz NO SIGNAL	0	0	0.7	0	0.7	0	
AM 144kHz NO SIGNAL	0	0	0.3	0	0.3	0.3	

■ VCD section



TO MAIN PWB
SHEET 3/9

➔ VIDEO signal

- NOTES
1. VOLTAGES ARE DC-MEASURED WITH A DIGITAL VOLT METER
CONDITION: MODE 1 DISC1 STOP
 2. UNLESS OTHERWISE SPECIFIED:
ALL RESISTORS ARE 1/10W ± 5% METAL GLAZE RESISTOR.
ALL CAPACITORS ARE 50V CERAMIC CAPACITOR OR 50V MYLAR CAPACITOR.
ALL RESISTANCE VALUES ARE IN Ω(M Ω).
ALL CAPACITANCE VALUES ARE IN pF(pF).
ALL INDUCTANCE VALUES ARE IN HENRY(H).
 3. NI INDICATES COMPONENT NOT INSERTED

MX-GT98V/MX-GT95V/MX-GT88V
MX-GT85V/MX-G78V/MX-G75V

MX-GT98V/MX-GT95V/MX-GT88V
MX-GT85V/MX-G78V/MX-G75V

■ Regulation & amplifier board

5

4

3

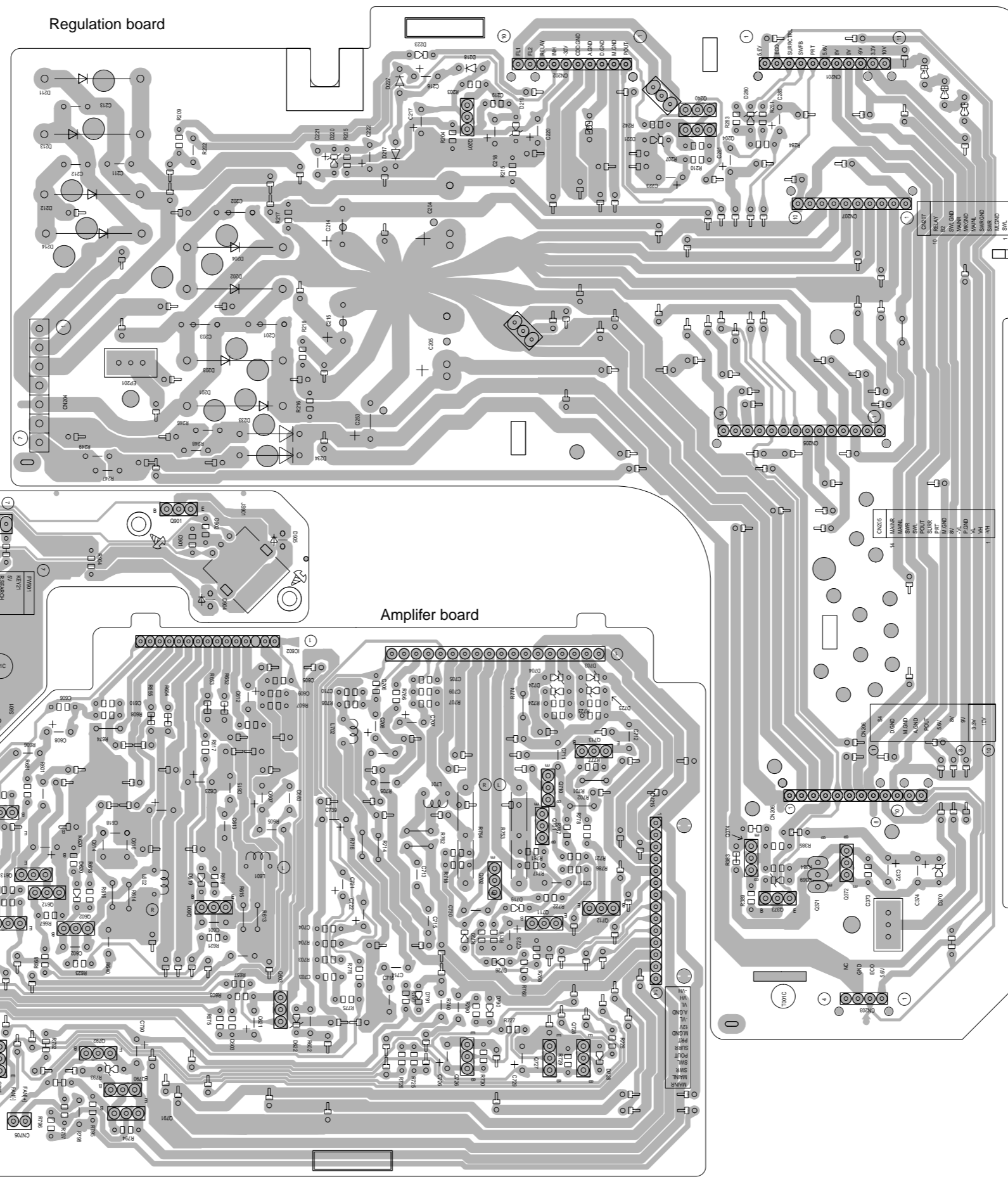
2

1

Regulation board

Preset/ tuning switch board

Amplifier board



A

B

C

2-12

D

E

F

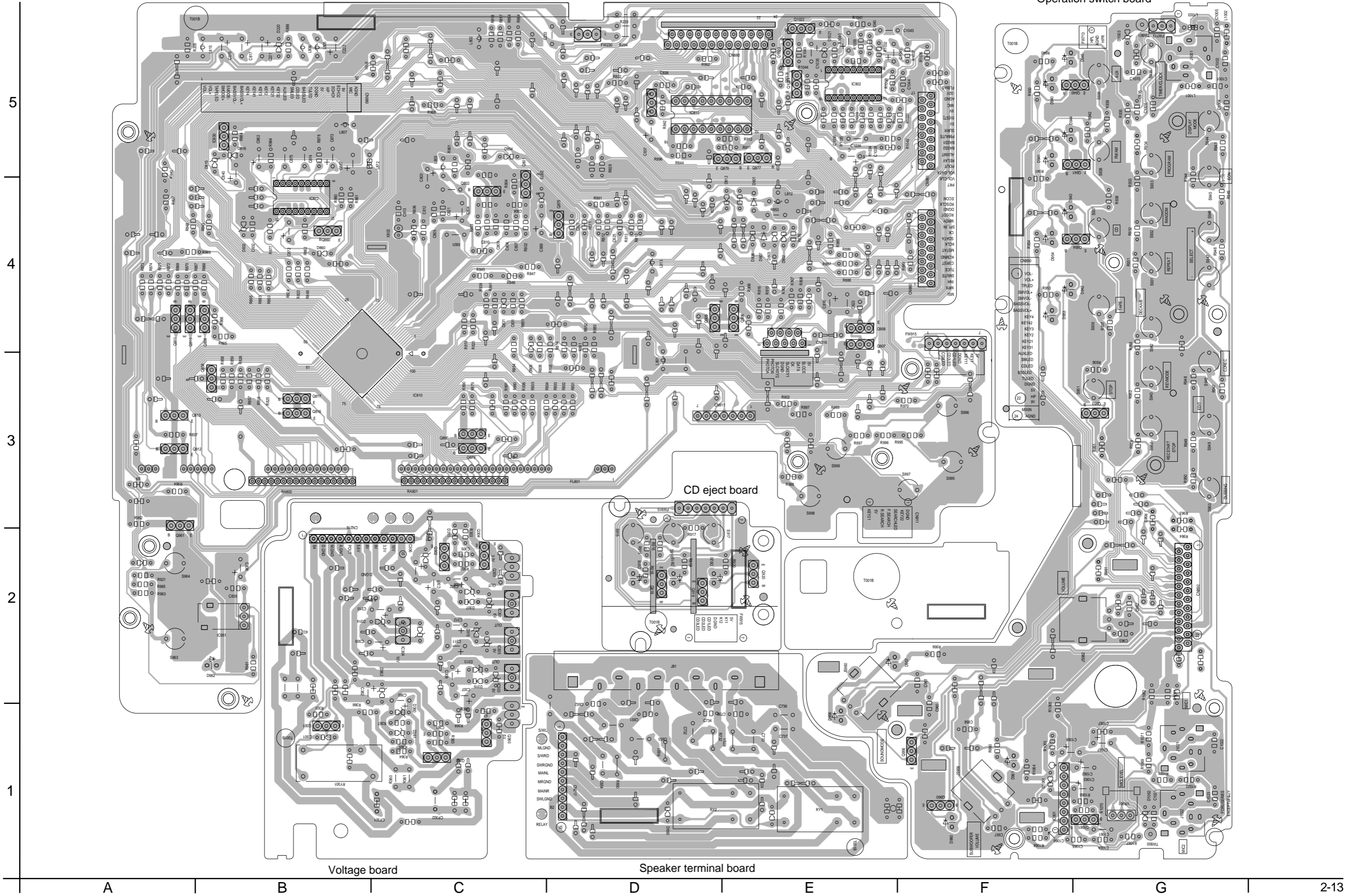
G

H

■ Front board

Display & system control board

Operation switch board



Voltage board

Speaker terminal board

A

B

C

D

E

F

G

